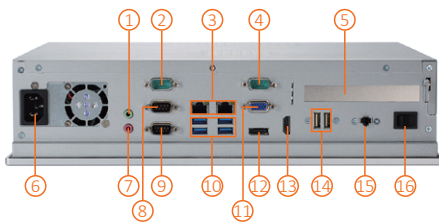
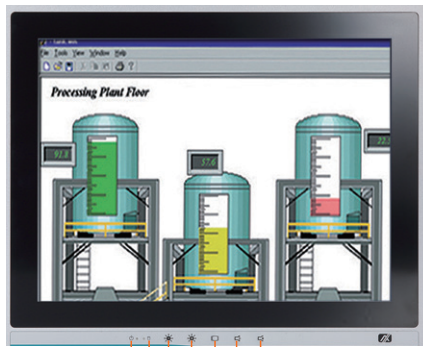


P1157E-500

15" XGA TFT Expandable Industrial Touch Panel Computer with 7th/6th Gen Intel® Core™ i7/i5/i3, Celeron® & Pentium® Processor and PCI/PCIe Slot

1. Display status LED
2. SATA status LED
3. Brightness-
4. Brightness +
5. Display monitor ON/OFF
6. Volume-
7. Volume +



- | | |
|-----------------------|-----------------------------|
| 1. 1 x Line-out | 9. 1 x RS-232 |
| 2. 1 x RS-232 | 10. 4 x USB 3.0 |
| 3. 2 x LAN | 11. 1 x VGA |
| 4. 1 x RS-232 | 12. 1 x DisplayPort |
| 5. PCIe x4 slot | 13. 1 x HDMI |
| 6. AC plug | 14. 2 x USB 2.0 |
| 7. 1 x Mic-in | 15. Remote power switch |
| 8. 1 x RS-232/422/485 | 16. Switch for power on/off |

Features

- 15" XGA TFT LCD display
- LGA1151 socket 7th/6th gen Intel® Core™ i7/i5/i3, Celeron® & Pentium® processors
- Intel® H110 chipset
- Less screw design for easy installation
- 4 USB 3.0, 2 USB 2.0 and 4 COM
- One PCIe x4 slot
- Built-in speakers and optional Wi-Fi 802.11 b/g/n module
- Robust IP65 compliant aluminum front bezel
- Supports 5 OSD keys in front panel



▲ Side view



▲ Back view

Introduction

The P1157E-500 is a multimedia 15" touch panel PC for kiosk application. It has a fashionable mechanism design and industrial-grade material front bezel which can avoid damage from chemical corrosion. To meet the demands of multimedia application, the P1157E-500 is powered by a high performance LGA1151 socket 7th/6th generation Intel® Core™ processor with the Intel® H110 chipset. It features four COM ports, two Gigabit Ethernet and up to 32GB memory of dual-channel DDR4-2133 that delivers high computing capability for high performance-demanding applications. The industrial touch panel PC is most suitable for kiosk, factory and automation.

Expandable for 1 PCIe

The P1157E-500 has one PCIe x4 slot for expansion purpose. User can easily plug in standard half-size PCIe card based on any application needs.

Speaker and WLAN Antenna Supported

The P1157E-500 features built-in speakers for kiosk application to display multimedia content program. It also supports WLAN module antenna (optional) for wireless network connectivity.

Friendly Less Screw Design

The P1157E-500 is designed with easy of maintenance in mind. There are only four screws on the back chassis, so that technicians can quickly remove the system's back cover with minimum effort.

Specifications

| | | |
|-------------------------------|---|---|
| Front Bezel | Aluminum w/ IP65/NEMA 4 rugged protection | |
| LCD Panel | Display Type | 15" XGA TFT LCD |
| | Brightness | 250 nits |
| | Resolution | 1024 x 768 pixels |
| | Viewing Angle | 160°/140° |
| Main System | CPU | LGA1151 socket 7th/6th gen Intel® Core™ i7/i5/i3, Celeron® & Pentium® processor |
| | Chipset | Intel® H110 |
| | System Memory | 2 x 288-pin DDR4-2133 Long-DIMM, up to 32GB |
| | BIOS | AMI UEFI BIOS |
| | Storage | 1 x 3.5" or 1 x 2.5" SATA HDD (9.5 mm height) |
| | Drive | N/A |
| IO Connector | Watchdog Timer | 255 levels, 1 to 255 sec. |
| | 3 x RS-232 | |
| | 1 x RS-232/422/485 | |
| | 1 x HDMI | |
| | 1 x VGA | |
| | 1 x DisplayPort | |
| | 4 x USB 3.0 | |
| | 2 x USB 2.0 | |
| | 2 x 10/100/1000 Mbps Ethernet (Intel® i219-LM/i211-AT) | |
| 1 x Audio (Mic-in & Line-out) | | |
| 1 x Remote power switch | | |
| TPM | N/A | |
| Expansion Interface | 1 x PCIe x4 | |
| Touchscreen | Projected capacitive multi-touch | |
| Power Supply | 100 to 240 VAC, 200W | |
| Power Consumption | 97.6W | |
| Dimensions | 378.3 mm (14.89") (W) x 90 mm (3.54") (D) x 310.3 mm (12.22") (H) | |
| Packing Dimensions | 510 mm (20.08") (W) x 186 mm (7.32") (D) x 532 mm (20.94") (H) | |
| Weight (net/gross) | 5.4 kg (11.90 lb)/7.8 kg (17.20 lb) | |
| Operating temperature | 0°C to +50°C (+32°F to +122°F) | |
| Relative humidity | 10% to 90% @ +40°C, non-considering | |
| Operating vibration | 1.0G, 5- 500 Hz, random | |
| Certifications | CE | |

Ordering Information

| | |
|---|---|
| P1157E-500-N-US PCT w/PCIe x4 (P/N: E221157122) | 15" XGA expandable industrial touch panel computer with LGA1151 socket 7th/6th gen Intel® Core™ i7/i5/i3, Pentium® & Celeron® processor, PCAP touch screen, PCIe x4 slot, 100 to 240 VAC with US power cord |
|---|---|

* Other configuration by request

* Specification and certifications may vary based on different requirements

Packing List

1 x P1157E-500
 1 x Panel mount kit
 1 x US power cord

Optional Accessories

Wi-Fi kit

P1157E-500 2.5" slim HDD kit

881211572AOE P1157E-500 rack mount kit

881211575AOE VESA & wall mount kit

E981604011 ATC10 (VESA arm clamp type)

E981604012 ATW10 (VESA arm wall mount)

E226171119 Stand kit

59403200B00E Remote power switch cable (100 cm)

Optional OS Installation

Skylake Windows® 7
Windows® 8.1
Windows® 10

Kaby Lake Windows® 10

Dimensions

