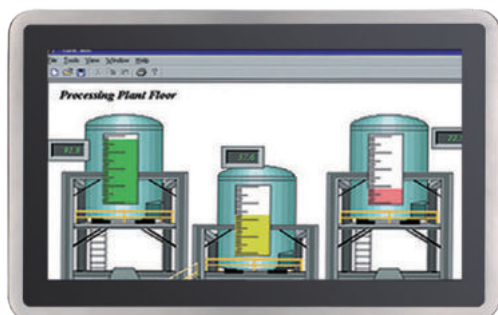


GOT815A-TGL-WCD NEW

15.6" WXGA TFT IP66 & IP69K-rated Stainless Steel Fanless PCT Panel Computer with Intel® Core™ i5-1145G7E or Celeron® 6305E Processor and Flat Bezel Design (-20°C to +50°C)



5 6 7 8 9 10

- | | |
|---|--|
| 1. Backlight on/off | 6. 1 x 2.5GbE LAN |
| 2. Brightness settings +/- | 7. 1 x RS-232/422/485 (default RS-232) |
| 3. Power on/off | 8. 1 x RS-232/422/485 (default RS-232) |
| 4. Proximity and light sensors (optional) | 9. 2 x USB 2.0 |
| 5. DC power connector | 10. 2 x USB 2.0 |

Features

- 15.6" WXGA TFT flat bezel LCD display
- IP66/IP69K-rated (NEMA 4) water/dust design
- Full stainless-steel enclosure with SUS 304
- -20°C to +50°C wide operating temperature range
- Fanless design with Intel® Core™ i5-1145G7E or Celeron® 6305E processor
- Wi-Fi kit for wireless network connectivity (optional)
- Supports VESA mount
- M12-type connectors for harsh environments
- Supports proximity and light sensors (optional)



▲ Side view

Introduction

The 15.6-inch GOT815A-TGL-WCD is specially designed for food processing applications. Its IP66-rated stainless steel housing protects entire system from damage of water, powder and dust. It also supports a wide operating temperature range from -20°C to +50°C. Thus, this robust unit is specifically designed for high humidity, dusty or wet spaces in food factories or kitchens and more harsh applications.

Full IP66 and IP69K Certified

The GOT815A-TGL-WCD adopts a water/dust-proof housing design with five IP66-rated M12 I/O connectors and IP69K that ensures the product's ability to resist ingress of high temperature and high pressure water. It was not only tested entire system IP66 by SGS and passed but also tested by a spray nozzle with high temperature water (+80°C), a flow rate of 14 to 16 L/min and a nozzle hold with distance 10 to 15 cm away from the device at angles of 0°, 30°, 60° and 90° for 30 seconds. The GOT815A-TGL-WCD is qualified to meet harsh-environment applications.

Wide Temperature (-20°C to +50°C) & Anti-vibration (1G) Design

The GOT815A-TGL-WCD featuring fanless and noiseless design supports a wide operating temperature range from -20°C to +50°C. Besides, the patent of anti-vibration for SSD ensures reliability and stability.

Specifications

Enclosure	Stainless steel (SUS) 304 or 316 (optional)	
LCD Panel	Display Type	15.6" WXGA TFT LCD
	Brightness (cd/m ²)	400 nits
	Resolution	1366 x 768
	Viewing Angle (H/V)	160°/140°
Main System	CPU	Intel® Core™ i5-1145G7E (Tiger Lake) 2.6 GHz or Celeron® 6305E 1.8 GHz
	Chipset	SoC integrated
	TPM	TPM 2.0 on board
	System Memory	1 x 260-pin DDR4-3200 SO-DIMM, up to 32GB
	BIOS	AMI UEFI BIOS
	Storage	1 x 2.5" SATA SSD/HDD (9.5mm height)
	Watchdog Timer	255 levels, 1 to 255 sec.
	Onboard Graphics	Integrated with Intel® Iris® Xe Graphics
I/O Connector	2 x RS-232/422/485 (default RS-232, A-coded)	
	4 x USB 2.0 (A-coded)	
	1 x 2.5GBase-T Ethernet with Intel® I225 (X-coded) supporting Wake-on-LAN and PXE Boot ROM	
	1 x DC power connector (M12 A-coded)	
Expansion Interface	1 x M.2 Key E slot (with PCIe x1 and USB 2.0 supported), dimensions: 22 x 30 mm	
Touchscreen	Projected capacitive multi-touch	
Power Input	12 to 24 VDC	
Power Consumption	72W	
Dimensions	414.8 mm (16.33") (W) x 55 mm (2.2") (D) x 265.1 mm (10.44") (H)	
Packing Dimensions	535 mm (21.06") (W) x 196 mm (7.72") (D) x 485 mm (19.09") (H)	
Weight (net/gross)	5.8 kg (12.78lb)/8.8 kg (19.40lb)	
Operating Temperature	-20°C to +50°C (-4°F to +122°F)	
Relative Humidity	10% - 95% @ +40°C, non-condensing	
Operation Vibration	1G, 5 - 500Hz, random for 2.5" SSD	
Certifications	CE/FCC certified	
	C1D2/ATEX (optional)	

*W.T.: Wide temperature. All W.T. supported products have to be sorted by Axiomtek.

Ordering Information

GOT815A-TGL-WCD (P/N: E22B815A00)	15.6" WXGA fanless IP66 & IP69K-rated stainless steel touch panel computer with Intel® Core™ i5-1145G7E, projected capacitive touch screen, 400 nits LCD, and 12 to 24 VDC power input
--------------------------------------	--

* Other configuration by request

* Specification and certifications may vary based on different requirements

Packing List

1 x GOT815A-TGL-WCD
1 x DC cable

Optional Accessories

594B8122100E	Water-proof COM cable (1.8 m)
594B7102700E	Water-proof LAN cable (1.8 m)
594B8152820E	Water-proof USB cable (1.8 m)
509000002200	Adapter 24V 90W, M12 A-code 5P

Optional EOS Installation

Windows® 10 IoT, Windows® 11 IoT

Optional OS Installation

Windows® 10, Windows® 11 and Linux

Dimensions

