

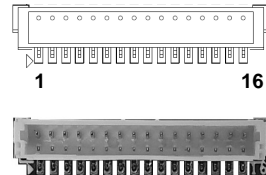
AX92918 Series Quick Installation Guide

Connector

Connector	Description
CN1	Ethernet 1 Connector
CN2	Ethernet 2 Connector

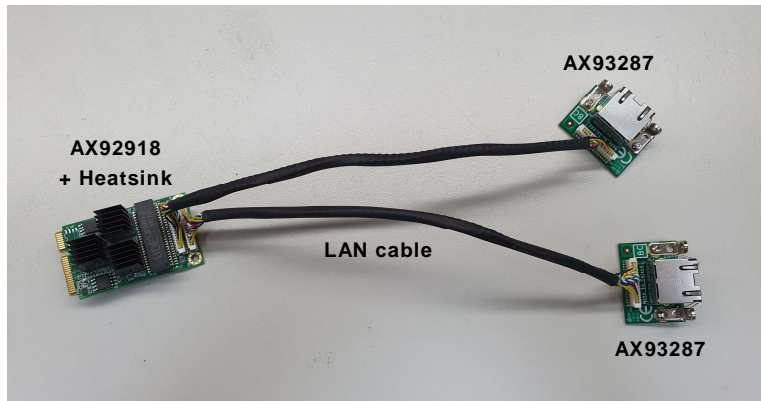
Ethernet Connectors (CN1 and CN2)

Pin	Signal	Pin	Signal
1	100_LAN_LED	9	MDI1-
2	1000_LAN_LED	10	MDI1+
3	NC	11	GND
4	MDI3-	12	MDI0-
5	MDI3+	13	MDI0+
6	GND	14	NC
7	MDI2-	15	LINK_A CT
8	MDI2+	16	VDD3



Wiring Connection

Before proceeding with connecting AX92918 with AX93287 board(s), please make sure the system power is completely off. The AX93287 and any LAN cable in the accessories pack can be connected to CN1 and CN2 of AX92918 as shown in below image.

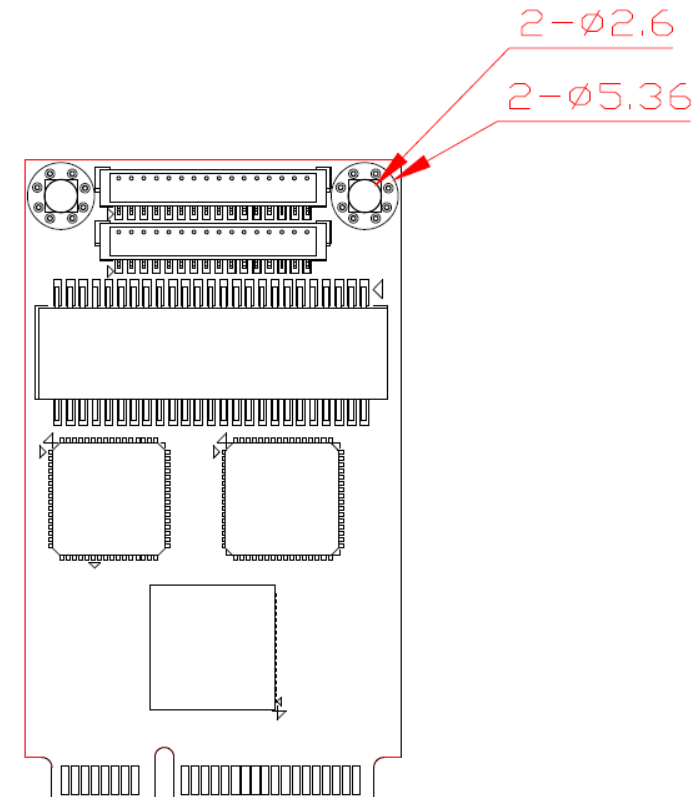


Checklist

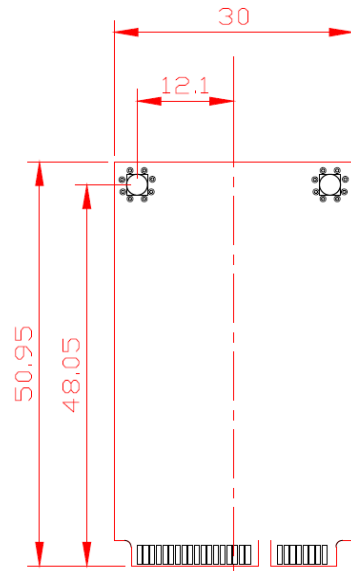
- ✓ AX92918 Board x1
- ✓ AX93287 Board x2
- ✓ LAN Cable x2
- ✓ Heatsink x3
- ✓ M2 Screw x2
- ✓ M3 Screw x4

Note: Please contact your local vendors if any damaged or missing items. DO NOT apply power to the board if there is any damaged component.

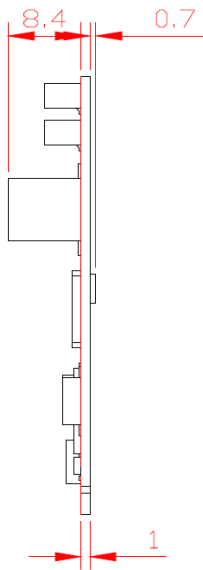
Dimensions and Fixing Holes



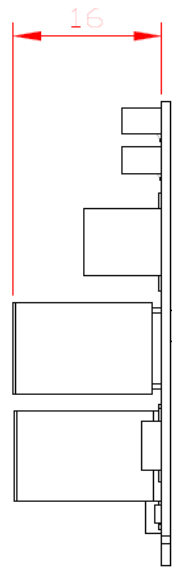
Top View



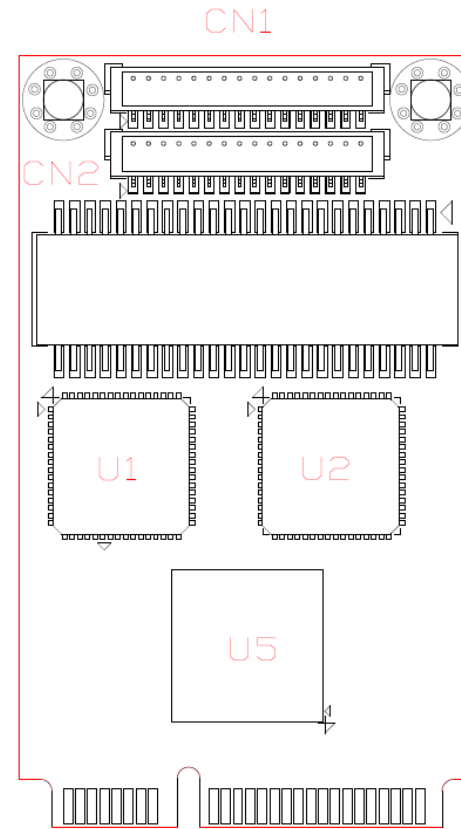
Bottom View



Side View



Board Layout



Top View

Note: If necessary, install the three heatsinks included in the accessories pack until they make complete contact with the U1, U2, and U5.